

SNAKE TRAP
FULLY ASSEMBLED

PROJECT TITLE :
SNAKE TRAP TECHNICAL DRAWINGS



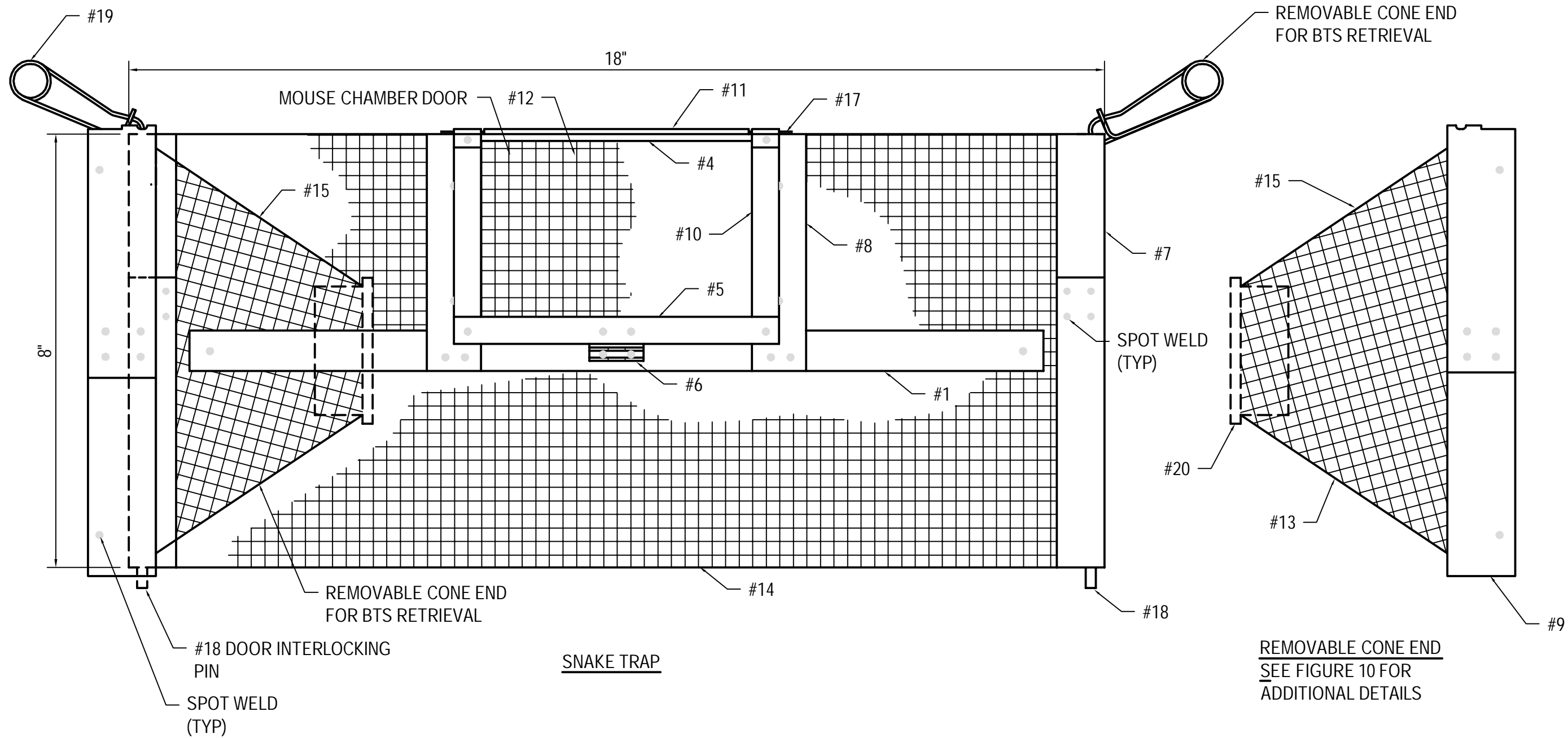
SHEET TITLE :
SNAKE TRAP
FULLY ASSEMBLED

DATE
6-23-2014

SCALE
NTS

FIGURE 1

SHEET
1 OF 10

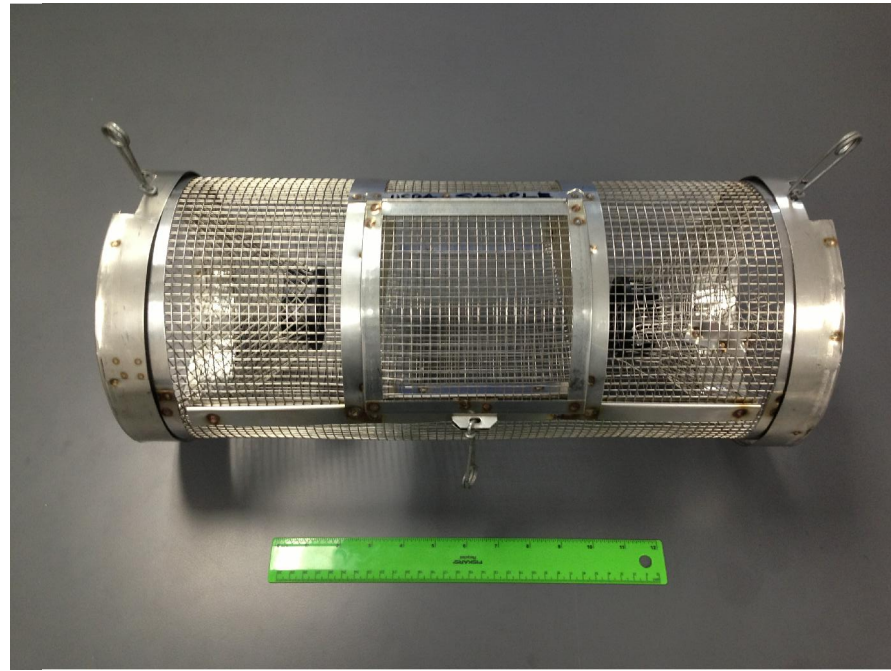


SNAKE TRAP

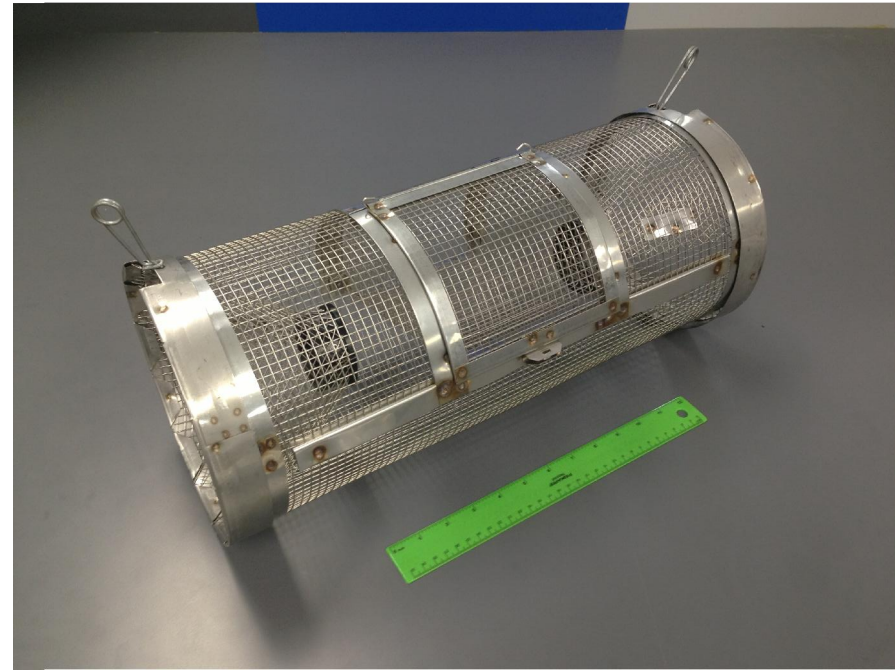
REMOVABLE CONE END
SEE FIGURE 10 FOR
ADDITIONAL DETAILS

NOTES:
LOCATION OF SPOT WELDS ARE SHOWN FOR
REFERENCE PURPOSES ONLY. ACTUAL SPOT WELD
LOCATIONS SHALL BE PLACED AS REQUIRED
BY THE SNAKE TRAP FABRICATOR.

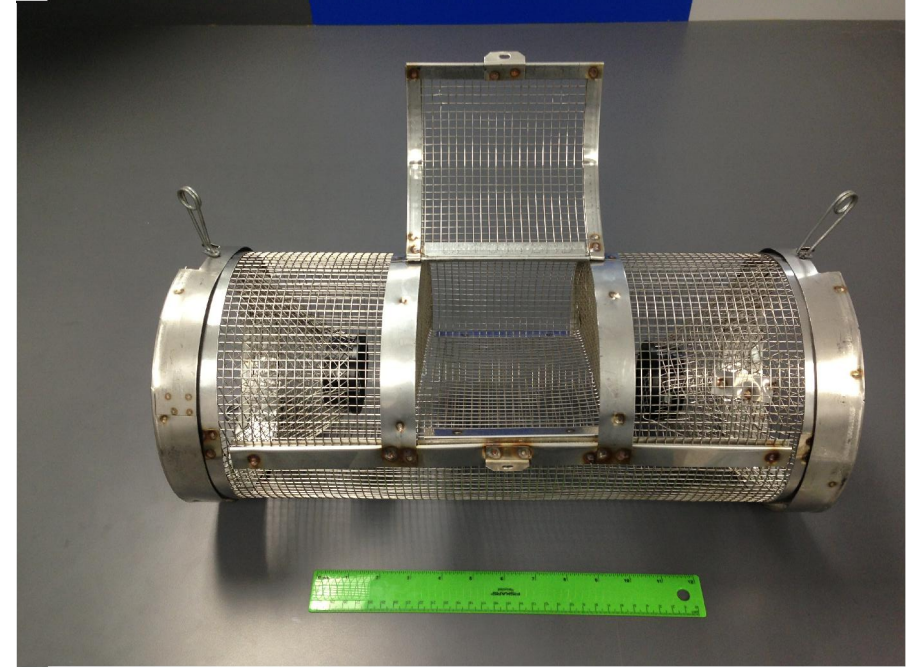
PROJECT TITLE :	SNAKE TRAP TECHNICAL DRAWINGS	
	SNAKE TRAP WITH CONE REMOVED	
DATE	6-23-2014	FIGURE 2
SCALE	NTS	SHEET
		2 OF 10



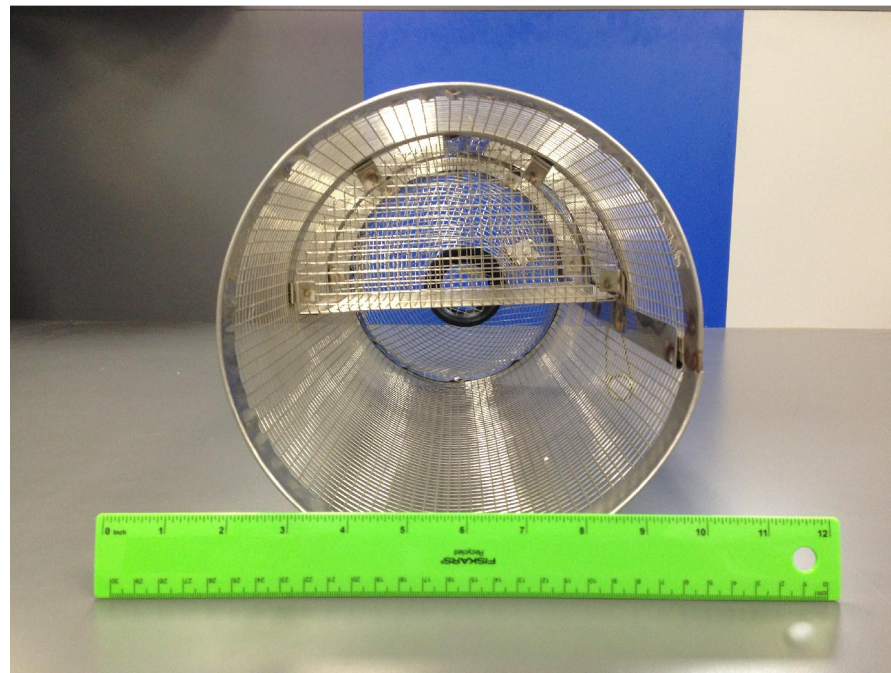
SNAKE TRAP
PHOTO 1



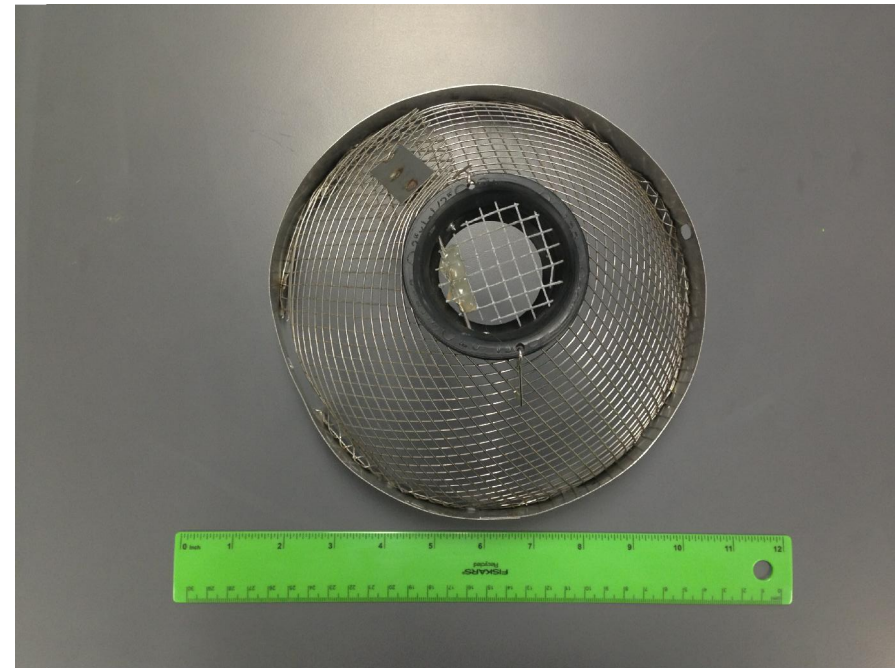
SNAKE TRAP
PHOTO 2



SNAKE TRAP - MOUSE CHAMBER DOOR OPEN
PHOTO 3



OPEN SIDE VIEW - CONE REMOVED
PHOTO 4



REMOVABLE CONE END
PHOTO 5

FIGURE 3

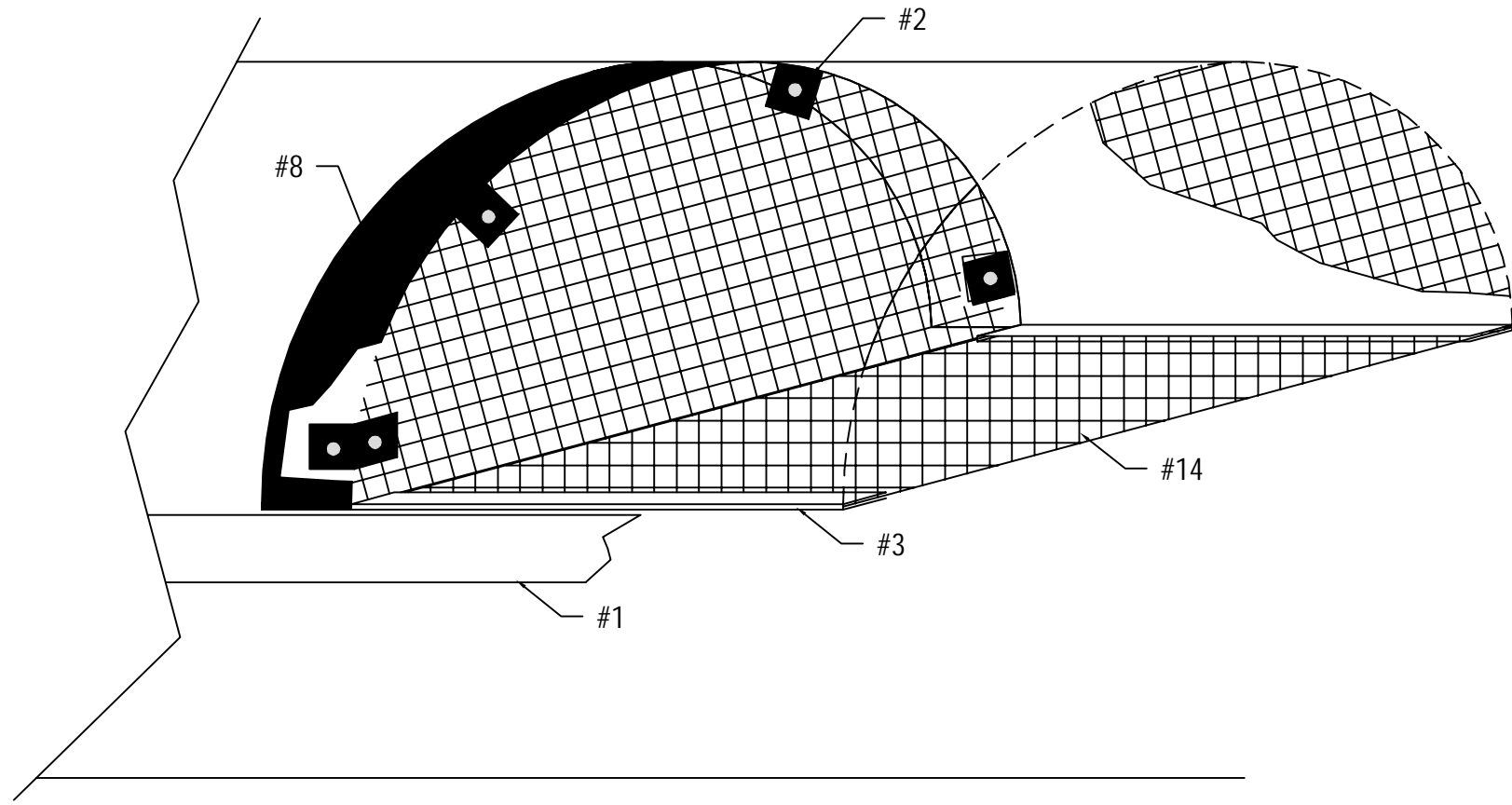
DATE
6-23-2014

SHEET TITLE:
SNAKE TRAP
PHOTOGRAPHIC IMAGES

PROJECT TITLE:
SNAKE TRAP TECHNICAL DRAWINGS

SHEET
3 OF 10

SCALE
NTS



MOUSE CHAMBER ISOMETRIC

PROJECT TITLE :
SNAKE TRAP TECHNICAL DRAWINGS



SHEET TITLE :
**MOUSE CHAMBER
 ISOMETRIC**

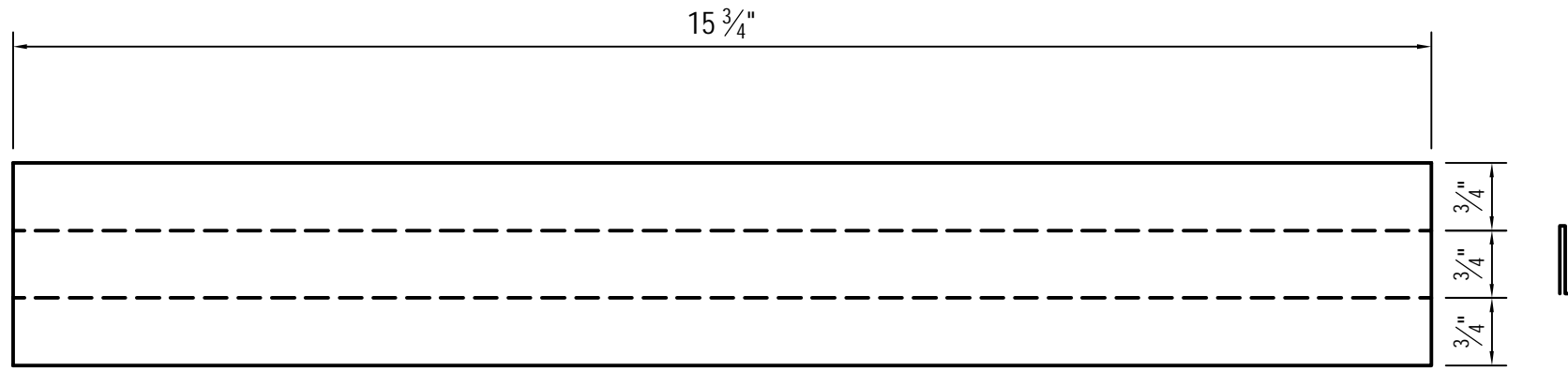
DATE
6-23-2014

SCALE
NTS

FIGURE 4

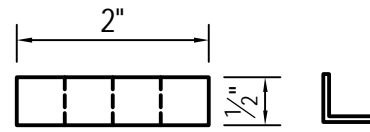
SHEET

4 OF 10



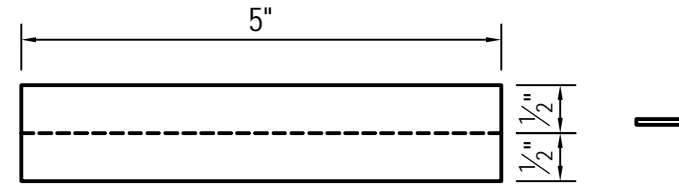
S-CLEAT/26 GA SS (1)

PART #1



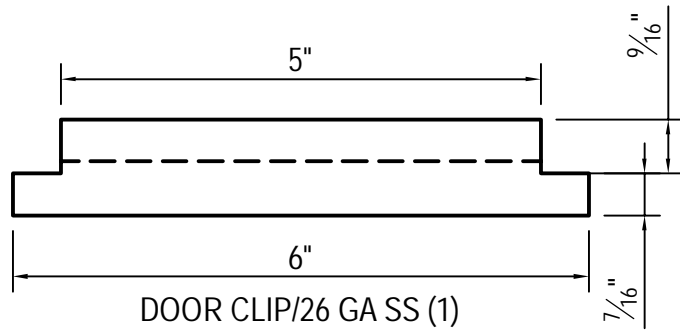
MS-CHMB CLIP/26 GA SS (8)

PART #2



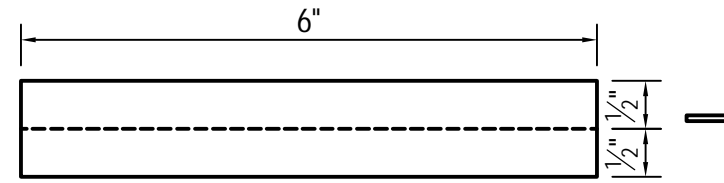
MS-CHMB CLIP/26 GA SS (2)

PART #3



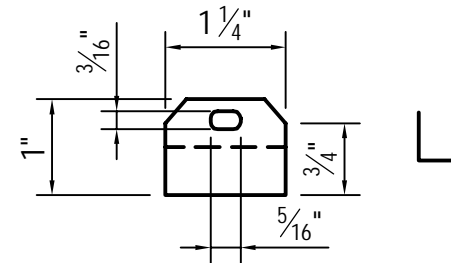
DOOR CLIP/26 GA SS (1)

PART #4



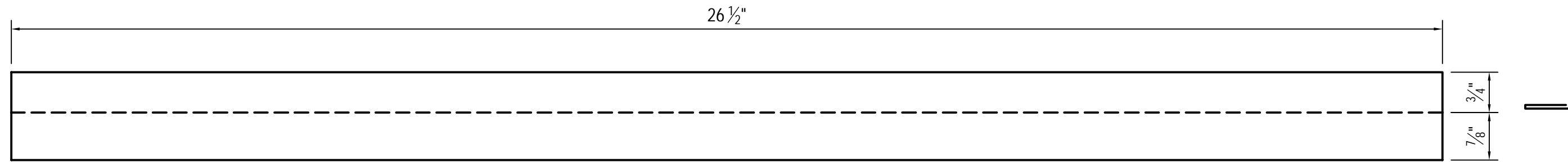
DOOR CLIP/26 GA SS (1)

PART #5

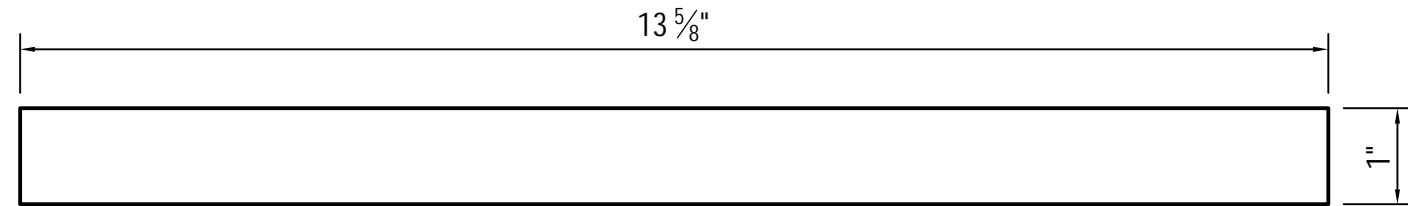


DOOR LOCK CLIP/24 GA SS (2)

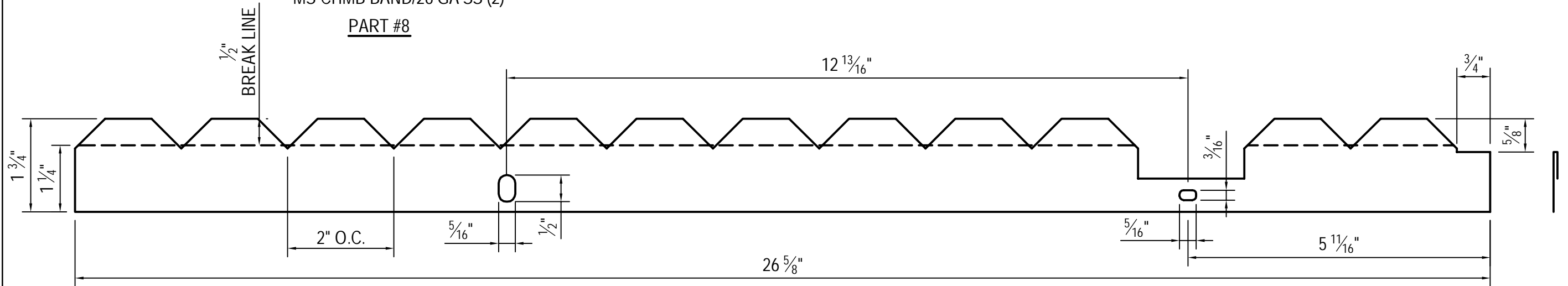
PART #6



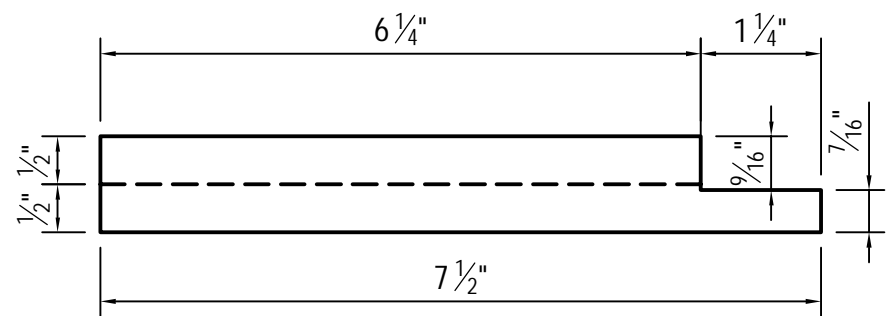
CHMB END BAND/26 GA SS (2)
PART #7



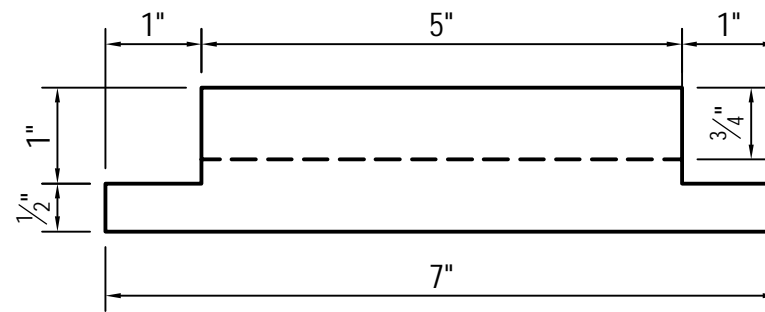
MS CHMB BAND/26 GA SS (2)
PART #8



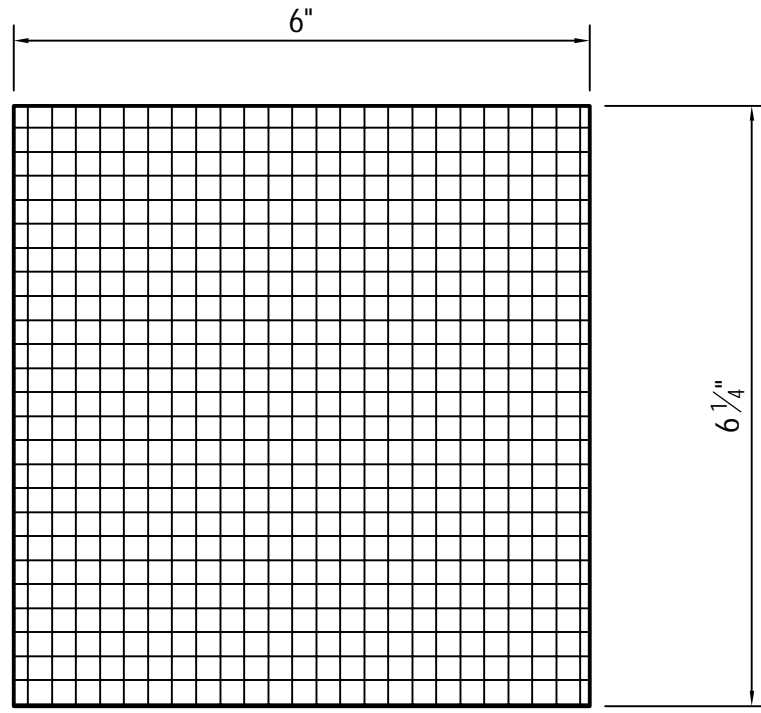
CONE BAND/24 GA SS (2)
PART #9



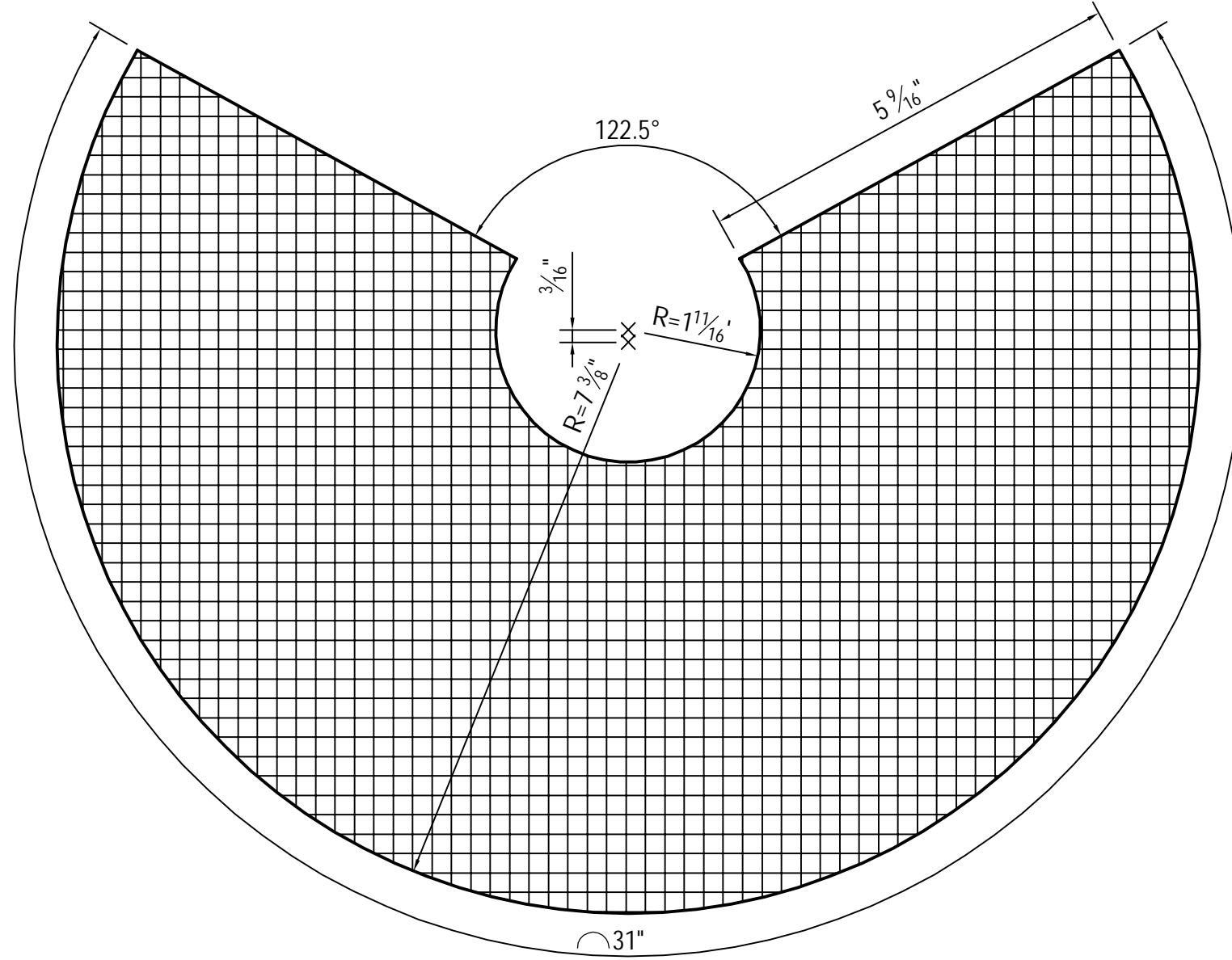
DOOR CLIP/26 GA SS (2) (1 RIGHT/1 LEFT)
PART #10



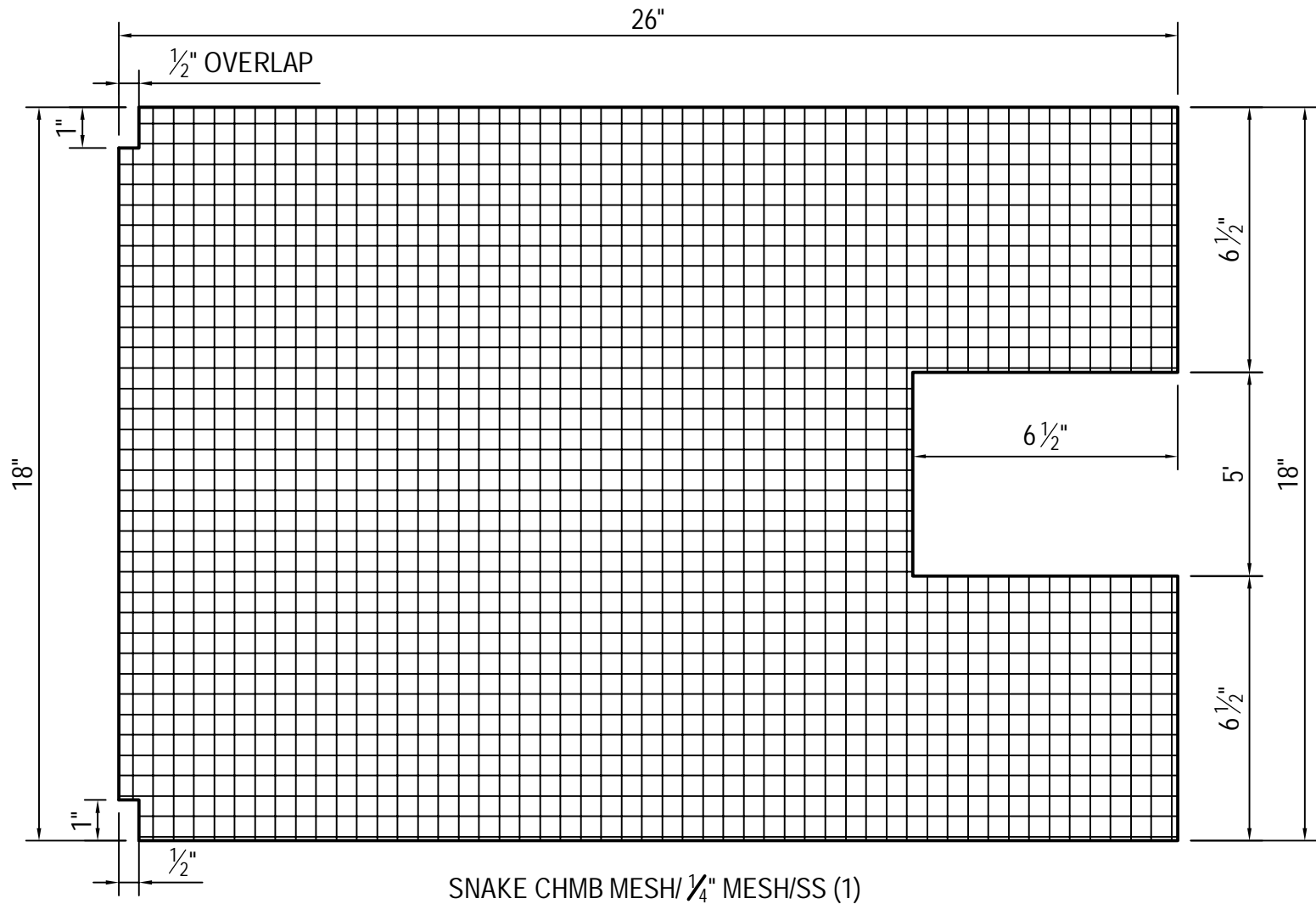
DOOR HINGE/26 GA SS (1)
PART #11



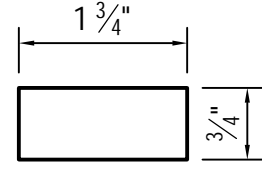
DOOR SCREEN $\frac{1}{4}$ " MESH/SS (1)
PART #12



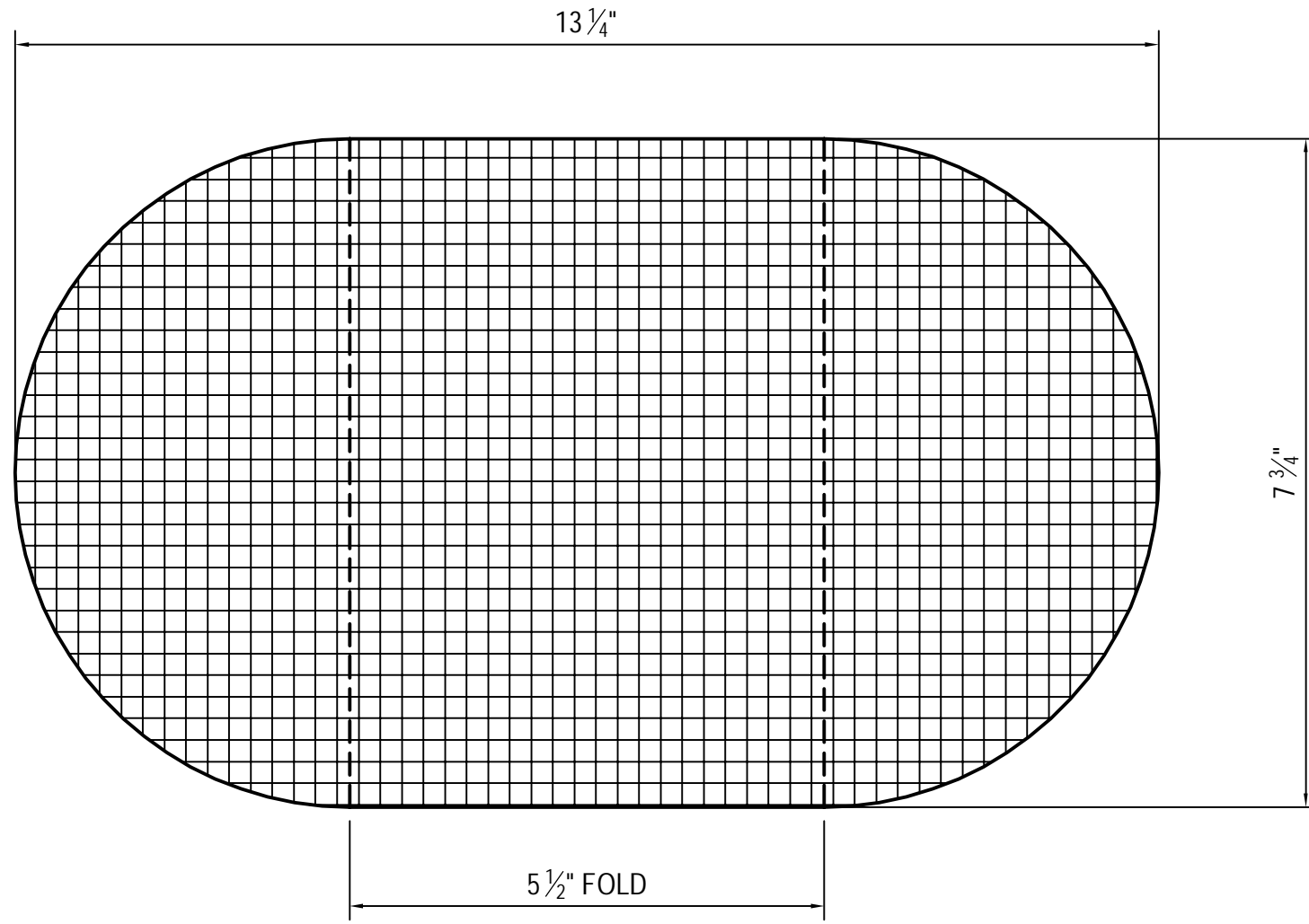
CONE END $\frac{1}{4}$ " MESH/SS (2)
PART #13



SNAKE CHMB MESH/ $\frac{1}{4}$ " MESH/SS (1)
PART #14



CONE JOINT CLIP/26 GA SS (4)
PART #15



MS CHMB FLOOR/ $\frac{1}{4}$ " MESH/SS (1)
PART #16



MS CHMB DOOR
 $\frac{1}{16}$ " x $7 \frac{13}{16}$ " SS ROD (1)
PART #17

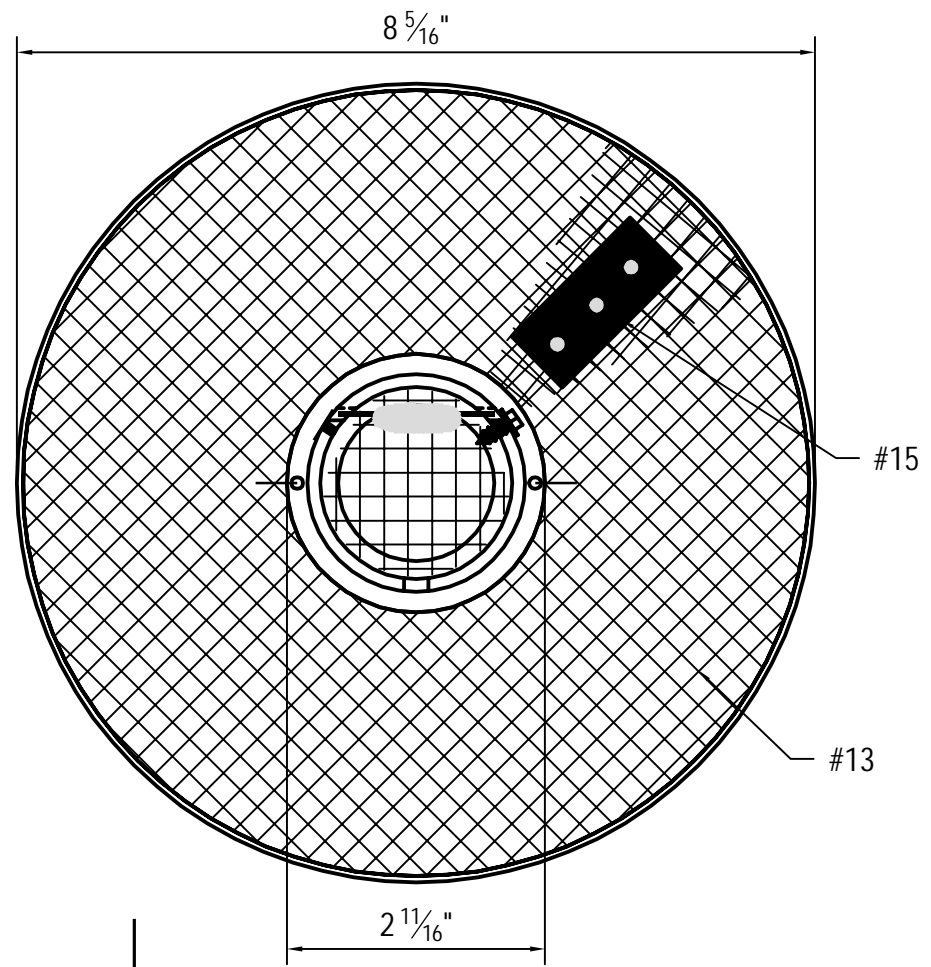
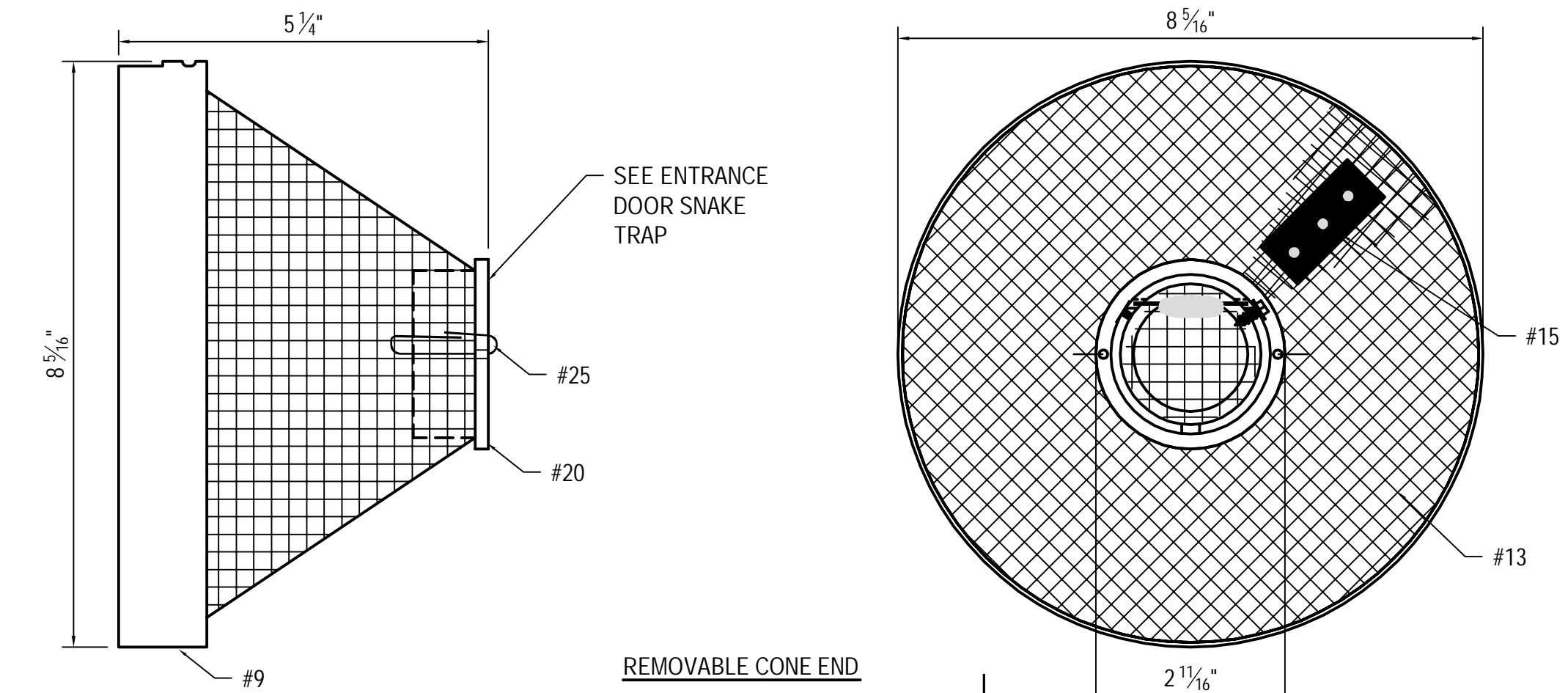


DOOR INTERLOCKING PIN
 $\frac{3}{16}$ " x $\frac{3}{8}$ " GRIP STAINLESS STEEL RIVET (2)
PART #18

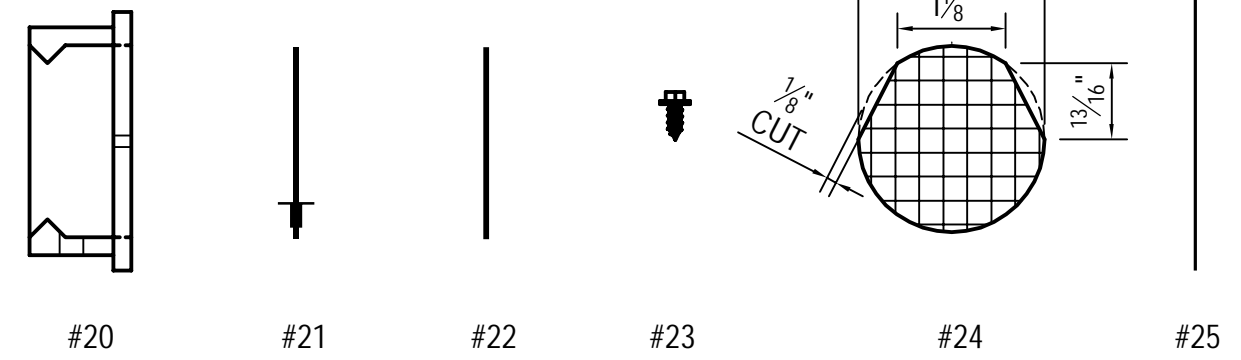


LOCKING PIN/TRAP CLIP (3)
PART #19

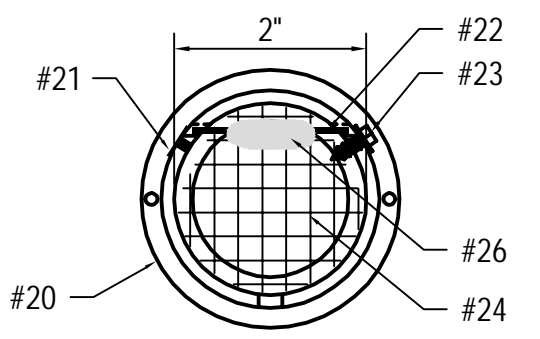
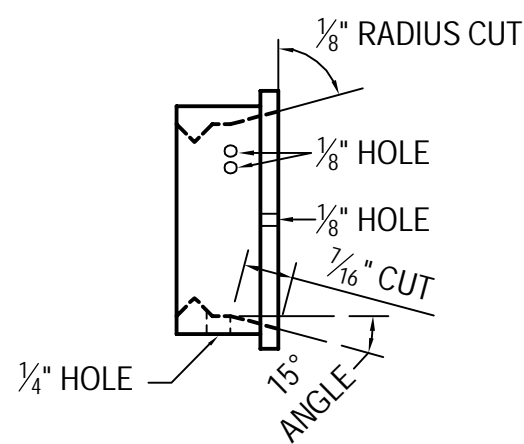
NOTE:
 HOLDS MOUSE CHAMBER
 CLOSED AND CONE ENDS ON



REMOVABLE CONE END



- PARTS LIST**
 #20- 2" x 1 1/2" ABS REDUCER BUSHING (2)
 #21- 1/8" x 3/16" GRIP, LARGE FLANGE, BLIND RIVET (2)
 #22- 1/16" x 2" STAINLESS STEEL PIN (2)
 #23- #8 x 3/8" HEX HEAD SCREW (2)
 #24- 22GA 1/4" WIRE MESH STAINLESS STEEL (2)
 #25- 1/32" x 3 3/4" STAINLESS STEEL (4)
 #26- APPLIED HOT GLUE (HOLDS WIRE DOOR TO PIN)



ENTRANCE DOOR - SNAKE TRAP

PROJECT TITLE : Snake Trap Technical Drawings United States Department of Agriculture Animal and Plant Health Inspection Service Wildlife Services	SHEET TITLE : Snake Trap Parts 20 Through 26 Cone End Assembly	DATE 6-23-2014	FIGURE 10
	SCALE NTS	SHEET 10 OF 10	